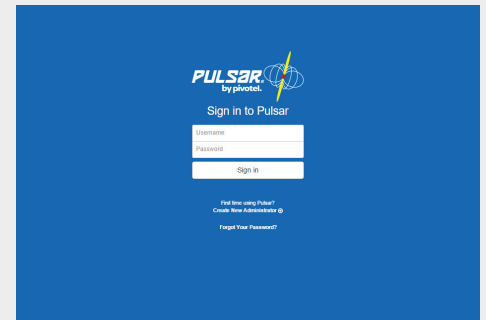


Step 1: Create Your Administrator Login

1. Open your browser and navigate to <https://www.pulsarportal.com>.
2. Under 'First time using Pulsar®?' click 'Create New Administrator'.
3. Enter your Pivotel Account Number and Password and click 'Verify Account'. If you do not know your Pivotel Account Number and Password, please contact Pivotel Customer Care 1300 882 448.
4. Choose and enter a Username, Display Name and your contact information in the fields provided. Your Username is used to log into Pulsar®, and your Display Name will be displayed in the Pulsar® Portal.
5. A password will be emailed to your Contact Email Address.
6. Click 'Return to Sign In' at the top-right of your screen and enter the password sent to your Contact Email Address. You can change this password by clicking 'Manage My User Account' and selecting 'Change Password'.

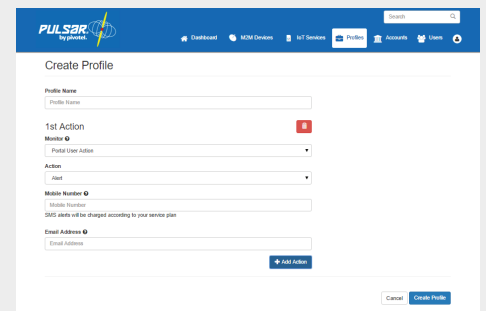


Step 2: Create Your Profile

You can receive automatic email and/or SMS alerts and set automatic barring limits to help control your costs and protect you against unexpected usage.

First you need to create a Pulsar® profile, then add devices to your profile (see Step 3). Every time you update a profile, the profile actions will refresh and impact every device associated with that profile.

1. Once logged in, select 'Profiles'.
2. Click 'Create Profile'.
3. Click 'Add Actions' if required.
4. To save your profile, click 'Update Profile'.



Within your Pulsar® profile, you can:

- **Create SMS and/or Email Alerts** - Monitor your data usage by creating SMS and/or email alerts at a percentage of data allowance used or a MB data value used since your last bill. The percentage value or MB data value of usage is determined by you.
 - **Control Data Usage** - You can control your data usage by creating automatic data barring within the Pulsar® system. These barring levels can be set to a percentage of data allowance used (up to 200%) or a MB data value used since your last bill.
 - **User Profiles** - Add as many profile actions, email and SMS alerts as required to effectively manage your usage and costs.
 - **Portal Alerts** - Receive an alert when another portal user bars or unbars a service.
 - **System Default Profile** - The default Pulsar® profile is set up to send an email alert to your Pivotel Account email address when your data usage reaches 50%, 85% and 100% of your included data allowance. Data barring will be enabled by the system when your usage reaches 150% of your included data allowance. You can adjust these thresholds to suit your own business rules and the assign your services to your profile in M2M Services or IoT Services, under 'Provisioning Group'.
- Please note - SMS notifications will be charged at the SMS rate in your Pivotel data plan.

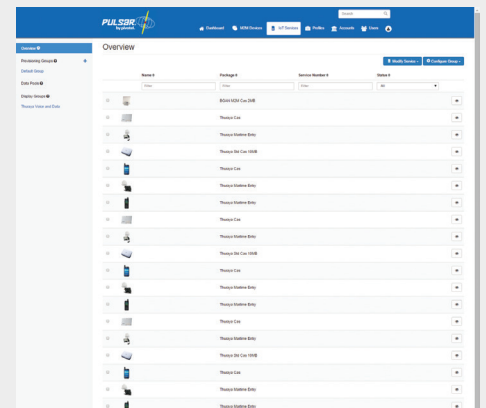
Step 3: Allocate Devices To Your Profile

Once you have created your Pulsar® profile (see Step 2) you must create a new provisioning group with your profile and assign your devices to the new provisioning group for your profile to take place. Each device can only be assigned to one profile. Therefore if you move the device to a new provisioning group, it will be removed from its current provisioning group automatically. By default, a device is assigned with the system default profile settings.

1. For IP based services, select 'IoT Service'. For store-and-forward services select 'M2M Services'.
2. Under 'Provisioning Groups' select 'Add Provisioning Group'.
3. Enter your 'Group Name' and select your 'Profile'.
4. Click 'Add' to save.

To move services to a new Provisioning Group:

1. Click and drag the services from the Default Group to the group of your choice.
OR
2. Select the device, then click 'Modify Service'.
3. Select 'Change Provisioning Group' and select the group you wish to move the device to.

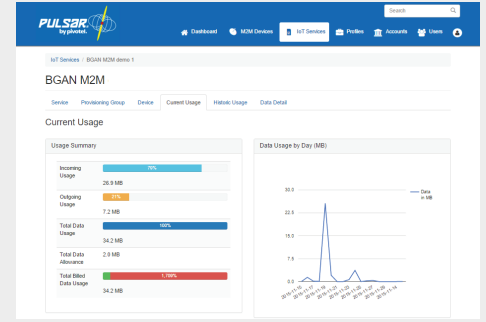


Step 4: Monitor Your Data Usage

To view the current month's data usage (usage since last bill):

1. Select the device you wish to check.
2. Select the 'Current Usage' tab and view 'Total Billed Data Usage' under 'Usage Summary'.

This section of Pulsar can also be used for threshold alert and bar/unbar actions.



Some things to note when monitoring your data usage using Pulsar®:

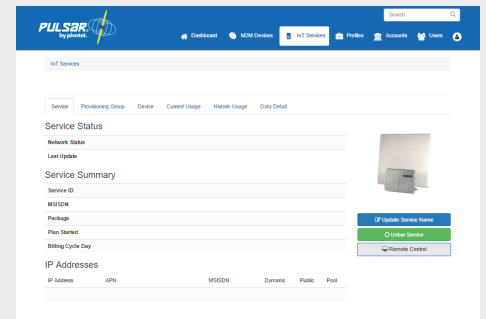
- Data volumes shown in other charts such as Data Usage by Destination IP and Protocols, Historic Usage and Data Detail use raw data for analytical purposes only.
- Raw data and billed data may not match exactly due to rounding in billing increments, and the time difference between capturing billed data and raw data passing through the network.

Step 5: Remote Control

Inmarsat BGAN M2M Remote Control is available within the Pulsar® Portal:

1. Select your device and click 'Service Status'.
2. Click 'Remote Control' and enter the white-listed mobile number for remote SMS commands if you have set it up in your terminal.
3. Enter your 'Remote SMS password' (the default password is 'remote'). Click 'Open Remote Control' to go to the BGAN M2M Web UI interface.

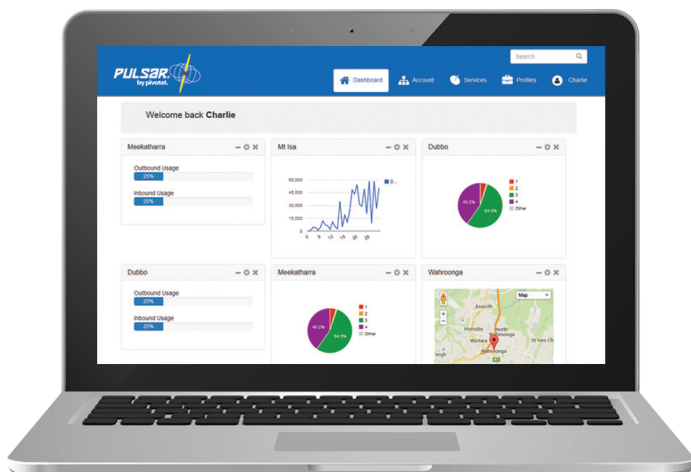
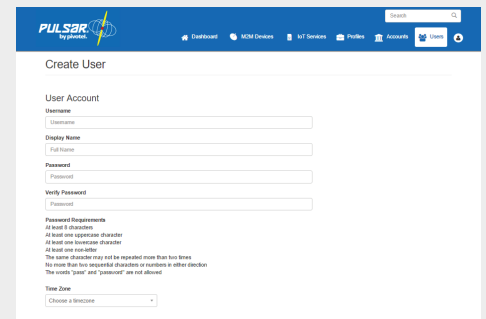
SMS and data usage for remote access will be charged according to your satellite plan.



Step 6: Create User, Super User & Admin

As an Admin user in the Pulsar® Portal, you can create other people as User, Super User or Admin. The roles and limitations are:

- User – can view only.
- Super User – can view all devices and perform all tasks other than editing profiles.
- Admin – full access with no limitations.



Manage your satellite data terminals and control your costs with Pulsar® Portal